



NO ADDITIONAL TIME WITHOUT COMPROMISE

System Configuration

DIQ 5R

Acquisition

203MBq / 5.5mCi ^{18}F -FDG

66 minute uptake

15 minute acquisition

Patient BMI

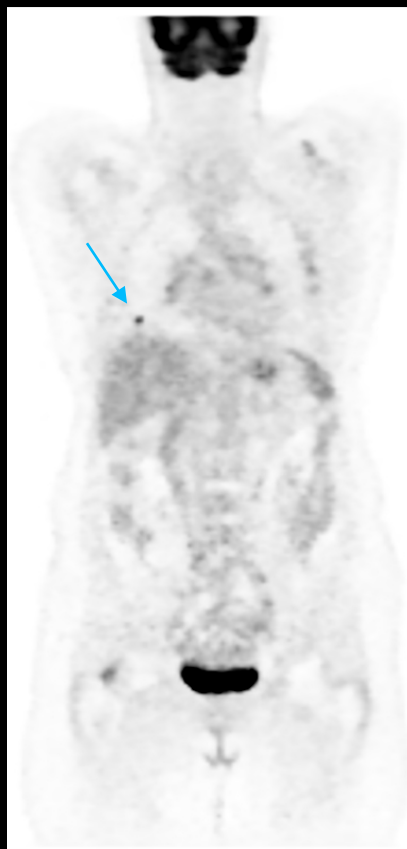
26.2

Takeaway

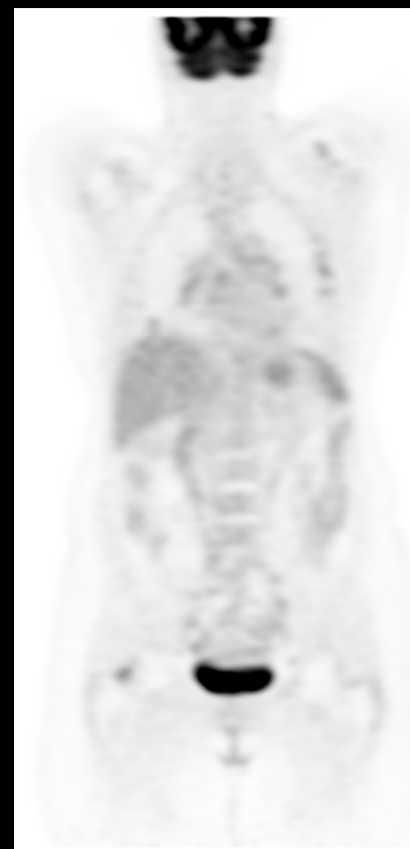
MotionFree and Q.Clear provides motion corrected images with improved quantitation.

Courtesy Tata Memorial Center

MotionFree



Conventional Static



MotionFree



SUVmax 7.03, Volume 6.93cm^3

Conventional Static



SUVmax 2.42, Volume 16.8cm^3





HIGH QUALITY BRAIN IMAGING

System Configuration

DIQ 5R

Acquisition

260 MBq / 7.0 mCi ^{18}F -FDG

115 minute uptake

7 minute acquisition

Clinical History

Patient referred to
PET/CT for evaluation
Astrocytoma

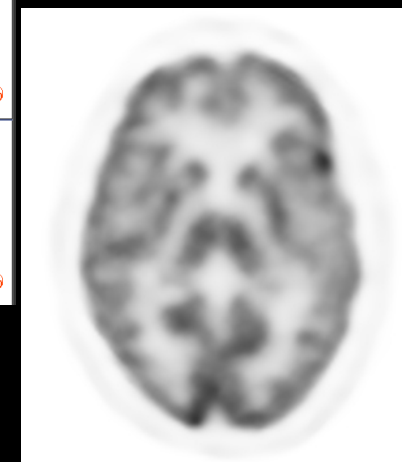
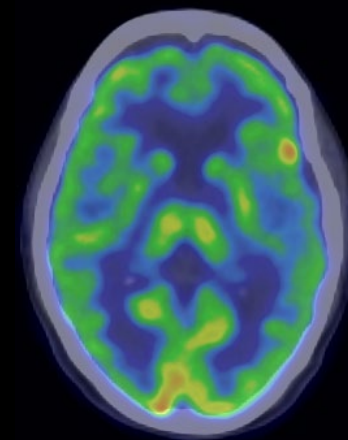
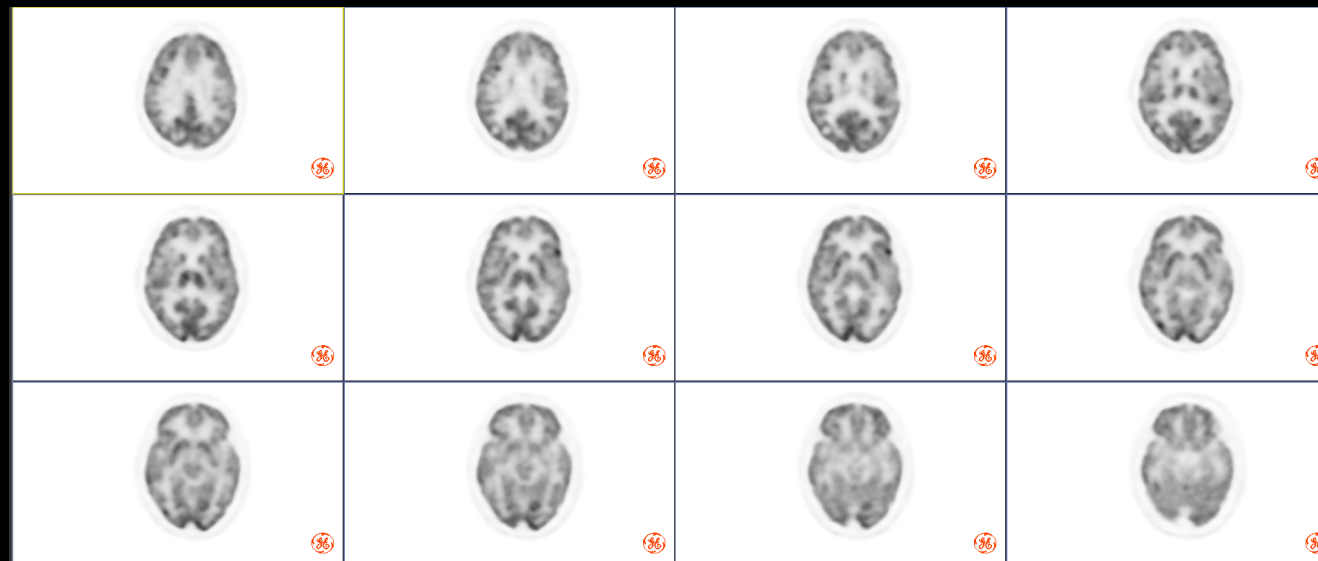
Patient Demographics

BMI 24.7

Takeaway

High Sensitivity
combined with enhanced
Q.Clear on Gen2
provides high quality
images.

Courtesy Tata Memorial Center





IMPROVED LESION DETECTABILITY

System Configuration

DIQ 5R

Acquisition

^{18}F -PSMA-1007

Dose: 4.3 MBq/Kg

120 min uptake, 2 min/bed

Clinical History

Late 60ies; GS 4+5; 2015 robotic prostatectomy followed by hormonal Tx

PSA \uparrow Jul18-2.8

Negative A/P CT & NMBS for PD

Patient Demographics

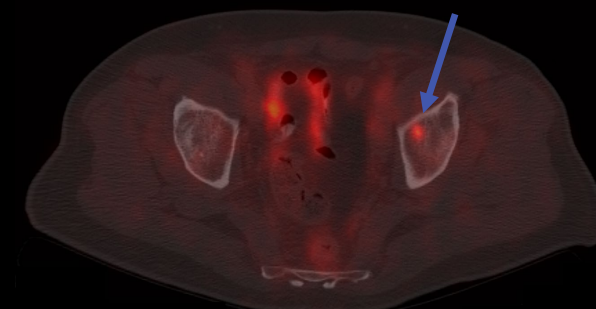
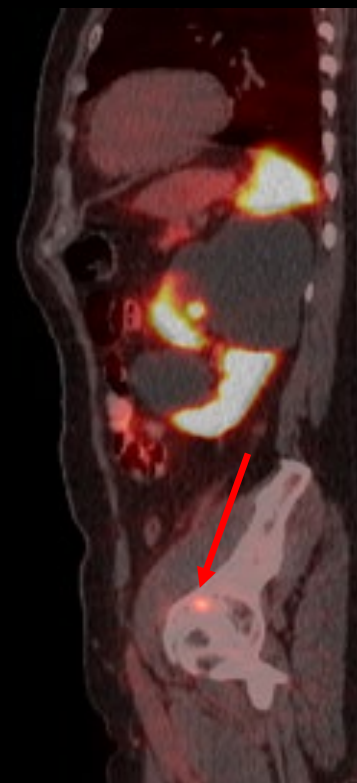
BMI 28.1

Takeaway

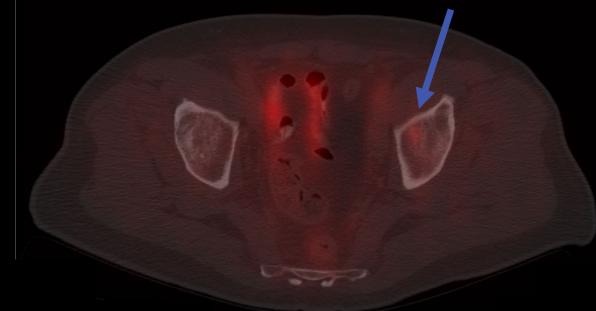
Q.Clear enables improved lesion detectability which is seen in Left acetabulum

Location: Dr. Skoura, Bioatriki, Athens, Greece

*PET Radiopharmaceutical may not be approved by ministers of health in all regions



Q.Clear



VPHD





IMPROVED LESION DETECTABILITY

System Configuration

DIQ 5R

Acquisition

18F-PSMA-1007 Dose: 316 MBq (Sep 2018)

120 min uptake Dose: 319 MBq (Jan 2019)

2 min/bed Recon: Q.Clear & VPHD

Clinical History

Early 60ies; 2011 Radical prostatectomy. GS 4+3; 2011 localized RTx

Slow PSA ↑ Sep 18 - 0.25 ng/ml

Sep 2018: Single external iliac LN 4x3mm. No therapy or intervention started after this scan. Jan 2019: 4 months after previous 18F-PSMA scan, this single external iliac LN increased to size 5x3 and PSMA is well visible on Q.Clear, but also now visible on the iterative reconstruction

Patient Demographics

BMI 24.7

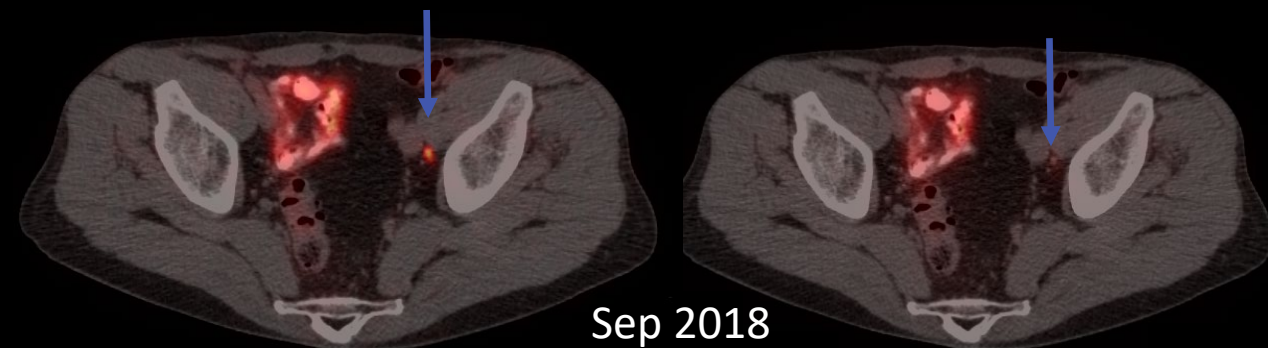
Takeaway

High Sensitivity combined with Q.Clear enabled treatment management

Courtesy of Dr. Skoura, Bioatriki, Athens, Greece

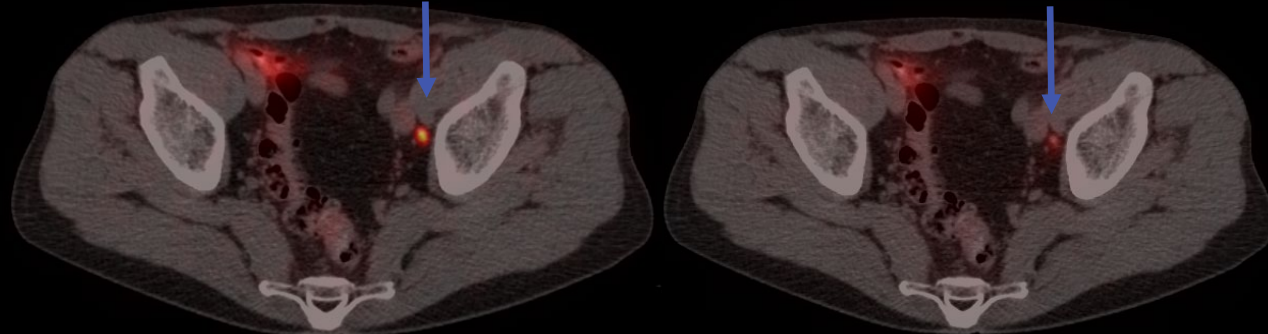
*PET Radiopharmaceutical may not be approved by ministers of health in all regions

4x3mm



Sep 2018

5x3mm



Q.Clear

Jan 2019

VPHD





CLINICAL EXCELLENCE AND EXPANSION

System Configuration

DIQ 5R

Acquisition

^{18}F -PSMA-1007

120 min uptake

2 min/bed

Clinical History

^{18}F -PSMA uptake in prostate gland infiltrating the left seminal vesicle, left external iliac lymph node 13x10mm, two very small left pararectal lymph nodes

Patient Demographics

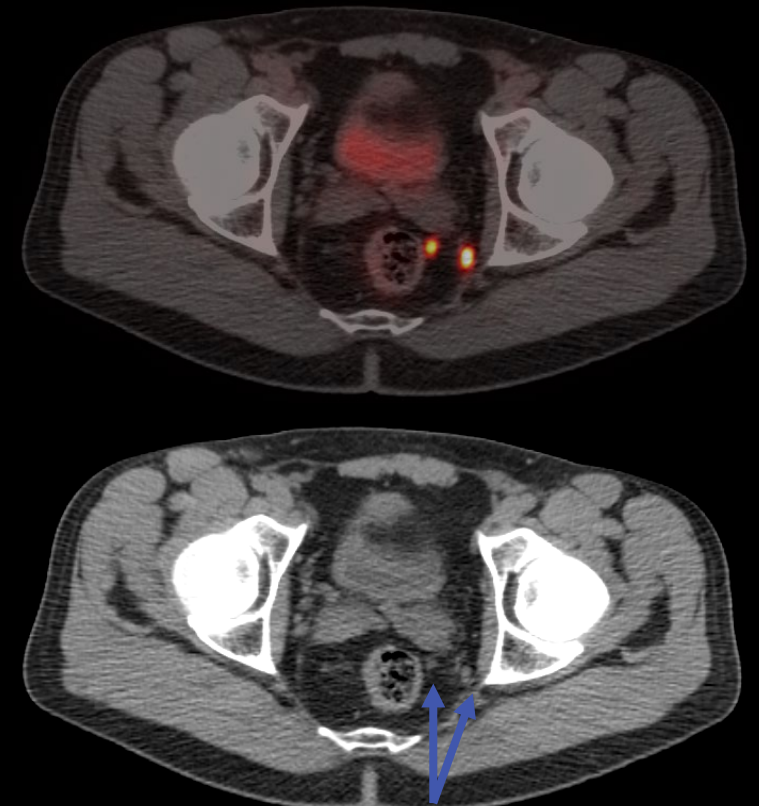
BMI 24.2

Takeaway

High Sensitivity combined with Q.Clear enabled small lesion detectability.

Courtesy of Dr. Skoura, Bioatriki, Athens, Greece

**PET Radiopharmaceutical may not be approved by ministers of health in all regions*



9x7 & 7x6mm

Not all tracers are approved in all regions





LOW DOSE, HIGH QUALITY IMAGE

System Configuration

DIQ 5R

Acquisition

6 min acquisition

140MBq / 3.79mCi FDG

60 minute uptake

Clinical History

Sarcoidosis.

Idiopathic dilated cardiomyopathy.

Patient Demographics

BMI 15.8

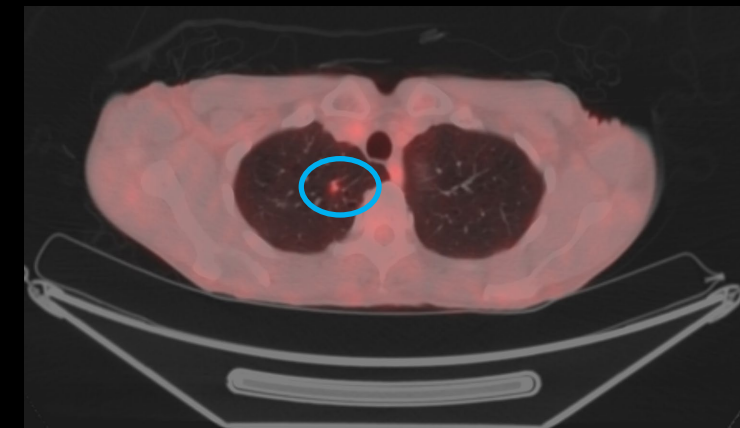
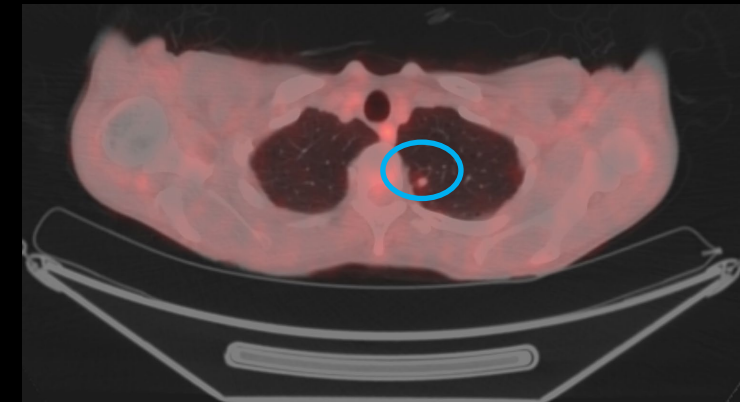
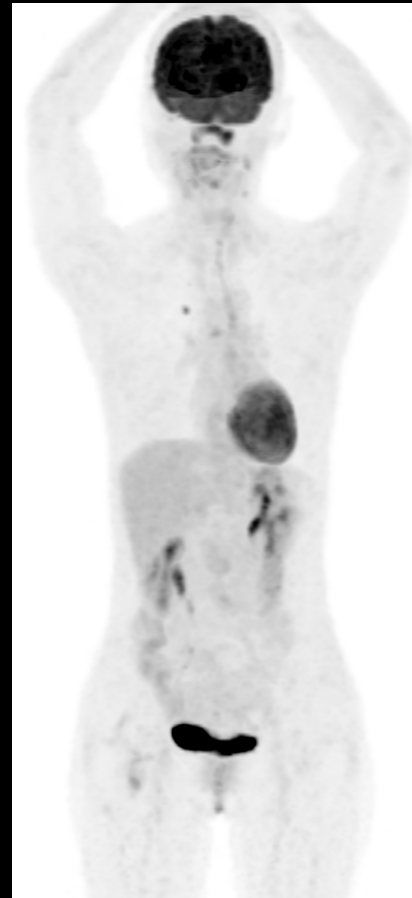
Takeaway

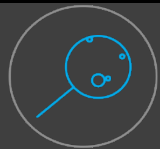
Nodules in both lung.

Suspicious of inflammation.

High Sensitivity enables low dose imaging.

Courtesy of Kyoto University, Japan.





HIGH SENSITIVITY, FAST SCAN

System Configuration

DIQ 4R

Acquisition

6 min acquisition

10.2mCi FDG

88 minute uptake

Clinical History

Malignant Melanoma

Solitary lesion.

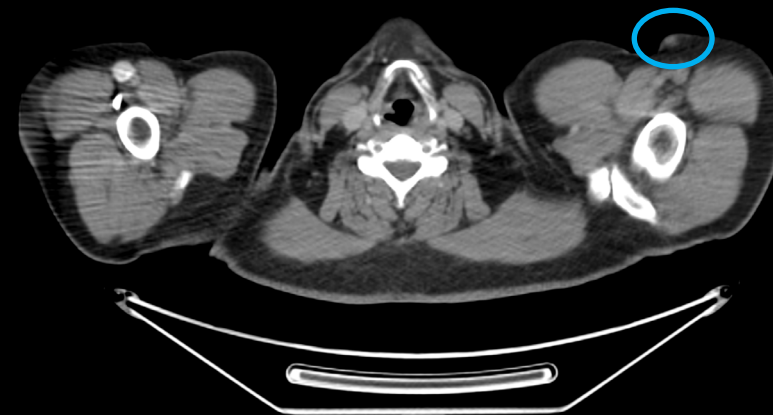
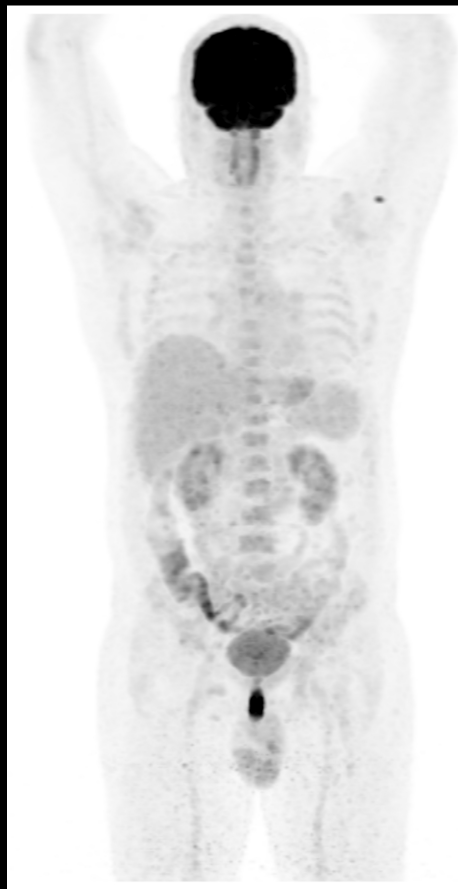
Patient Demographics

BMI 31.7

Takeaway

High Sensitivity and Q.Clear enables faster acquisition and lesion detectability.

Courtesy of Istanbul University, Turkey



SUV Max 4.49





IMPROVED Q.CLEAR BRAIN ON GEN2

System Configuration

DIQ 5R

Acquisition

288.6 MBq / 7.8 mCi of
18F-FDG

2 beds, 3 min/bed

Q.Clear- B200

Gen1



Patient Demographics

BMI: 23.8

Takeaway

New Q.Clear algorithm improves
image quality in coronal and
sagittal orientations.

Gen2

